



.12 Point Twelve

EU Hydrogen Week
November 20th, 2023

www.point-twelve.energy

“Certified Green” is what will distinguish winners from losers in the hydrogen space.



Green certification today

The DIY path



The Big4 path

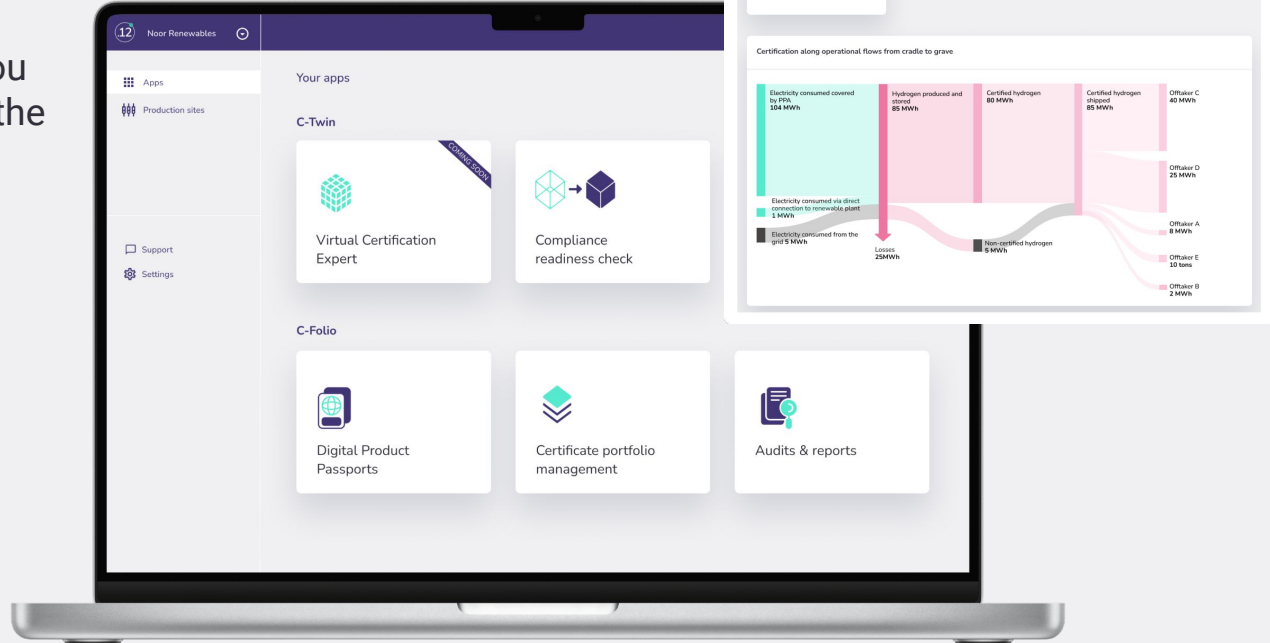


A photograph of a paved road with double yellow lines curving through a dense forest of tall, thin trees. Sunlight filters through the canopy, creating a bright path of light down the center of the road. The overall atmosphere is serene and natural.

The ideal path

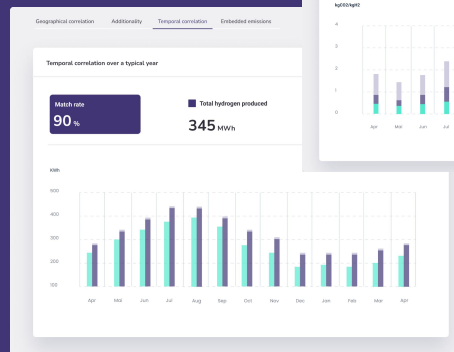
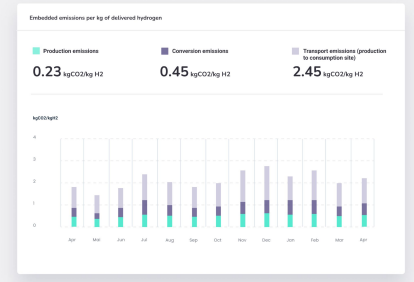
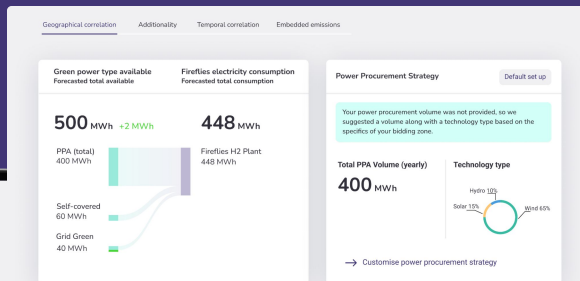
The solution

Automated green certification platform saving you **up to 90% time** in the process.





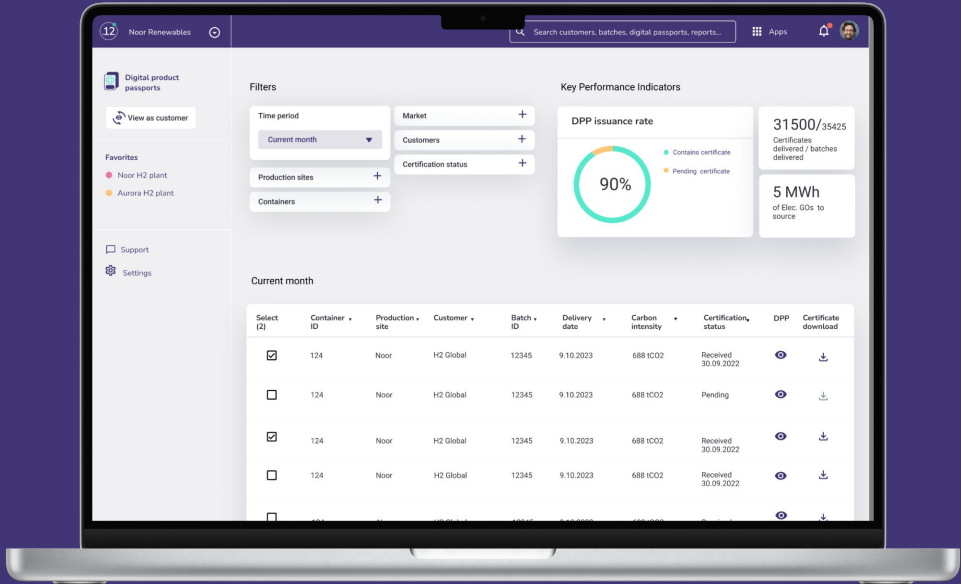
Compliance check



In partnership with



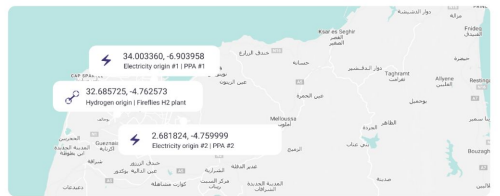
Digital Product Passports



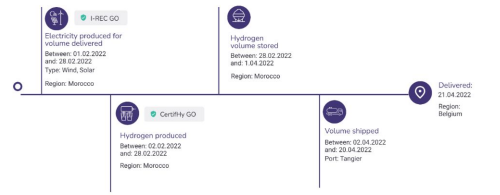
Delivery carbon content



Origin



Delivery lifecycle timeline



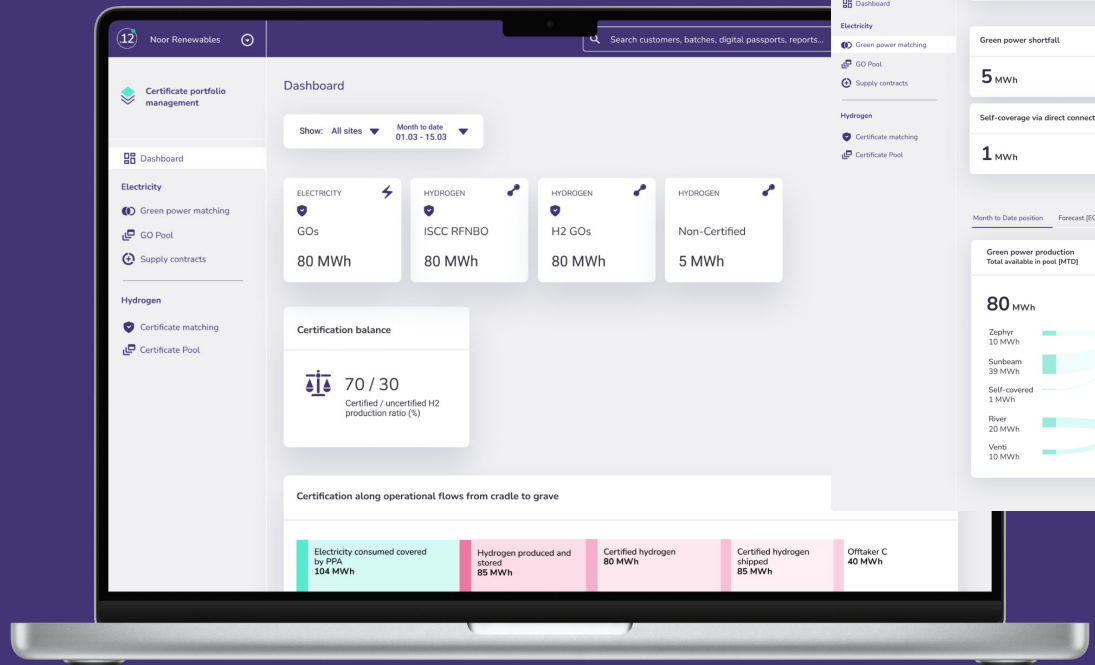
Cancelled Electricity GOs

Certificate ID (from-to)	Volume (MWh)	Domain	Fuel technology	Production period	Certificates issuing date	Production Device	Trading Scheme	Cancellation statement
g08n_1763-g08n_1769	10,056 MWh	Marocco	FD235985684-ST86686	12.03.2022 - 12.08.2022	01.09.2022	Zephyr	Guarantee of Origin	Download
g08n_1763-g08n_1769	3,056 MWh	Marocco	FD235985684-ST86686	12.03.2022 - 12.08.2022	01.09.2022	Aeros	Guarantee of Origin	Download

Issued Hydrogen Certificates

Certificate ID (from-to)	Product	Certification body	Volume (MWh)	Production period	Certificates issuing date	Electricity origin	POS
g08n_1762-g08n_1767	GREEN HYDROGEN CERTIFY	Tiv SUD	8,16 MWh H2	12.03.2022 - 12.08.2022	01.09.2022	Wind, Solar	Download

Certificate portfolio management



Certificate portfolio management

- Dashboard
- Electricity
 - Green power matching
 - GO Pool
 - Supply contracts
- Hydrogen
 - Certificate matching
 - Certificate Pool

Green power matching

Allocation period: Month to date 01.03 - 15.03

Green power shortfall

5 MWh

Self-coverage via direct connection

1 MWh

Green power allocation

100 %

Bouin

96 %

Hamburg

Month to Date position Forecast (EOM)

Green power production
Total available in pool (MTD)

80 MWh

- Zephyr 10 MWh
- Sunbeam 39 MWh
- Self-covered 1 MWh
- River 20 MWh
- Venti 10 MWh

H2 sites electricity consumption
Total consumption (MTD)

85 MWh

-5 MWh

- Bouin 50 MWh
- Hamburg 35 MWh

Allocate

Customise allocation rules matching electricity GO with H2 site consumption. Reorder green power production and H2 consumption sites to prioritise coverage. Customise before the 25th of the month, beyond this date a default prioritisation applies.

Green power sites production

- 1. Zephyr 10 MWh
- 2. Sunbeam 40 MWh
- 3. River 20 MWh
- 4. Venti 10 MWh

Add electricity production site +

H2 sites electricity consumption

- 1. Bouin 50 MWh
- 2. Hamburg 35 MWh

Add H2 consumption site +

Save

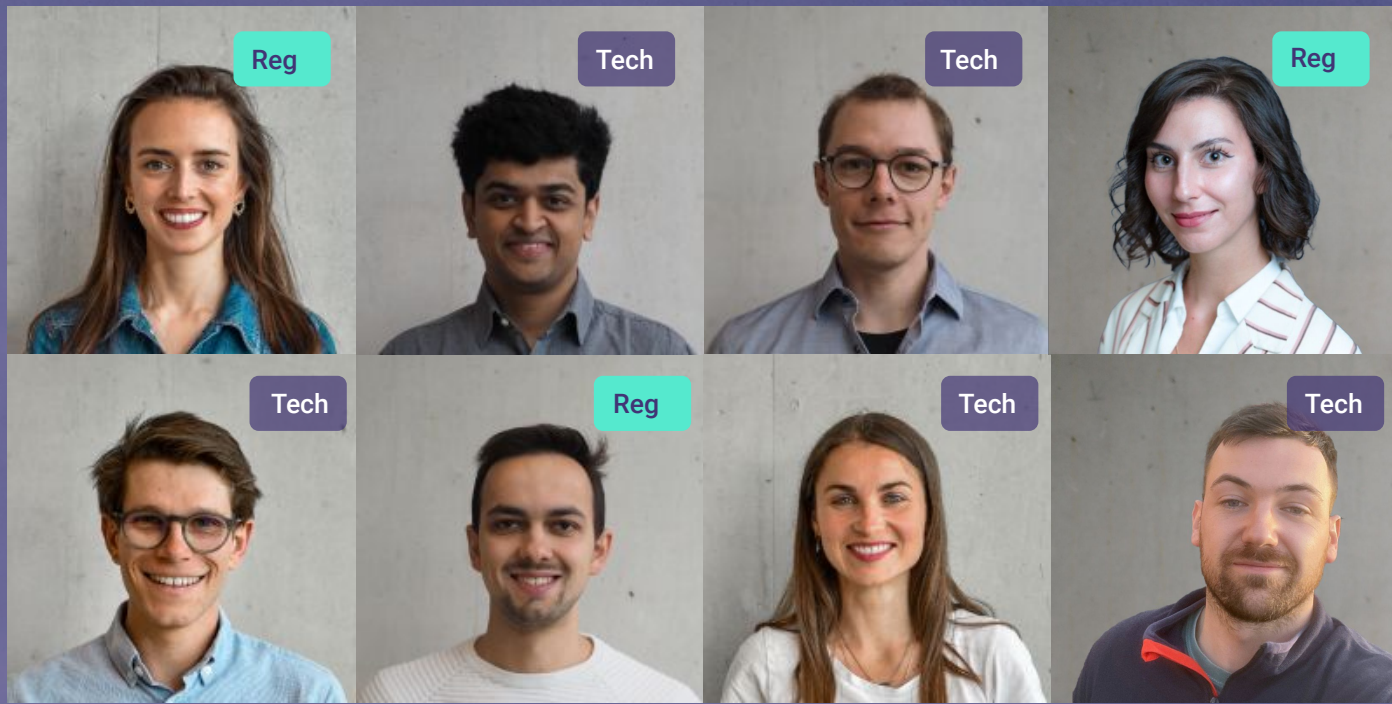
Value propositions

Save 90%
time.

Gain
immediate
trust.

Unlock
green
premiums.

Manage
risks,
efficiently.



We partner with...



We worked at...



Book a demo.



Connect

Flore de Durfort | CEO

@ flore@point-twelve.energy