

An aerial photograph of the Port of Amsterdam harbor. The water is dark with a vibrant rainbow arching across the lower-left portion. Several boats, including a large white ferry and smaller vessels, are visible on the water. The background shows the dense urban landscape of Amsterdam under a bright blue sky with scattered white clouds. The sun is visible in the upper right corner, creating a lens flare effect.

Port of Amsterdam Harbouring the energy transition

Eduard de Visser - Director Strategy & innovation



**78.6
million**

Tons transhipment

**4th Port in
Europe**



**7.25
billion**

Added value

73.009

jobs

**6.1
million m³**

tank capacity
2021



38.000

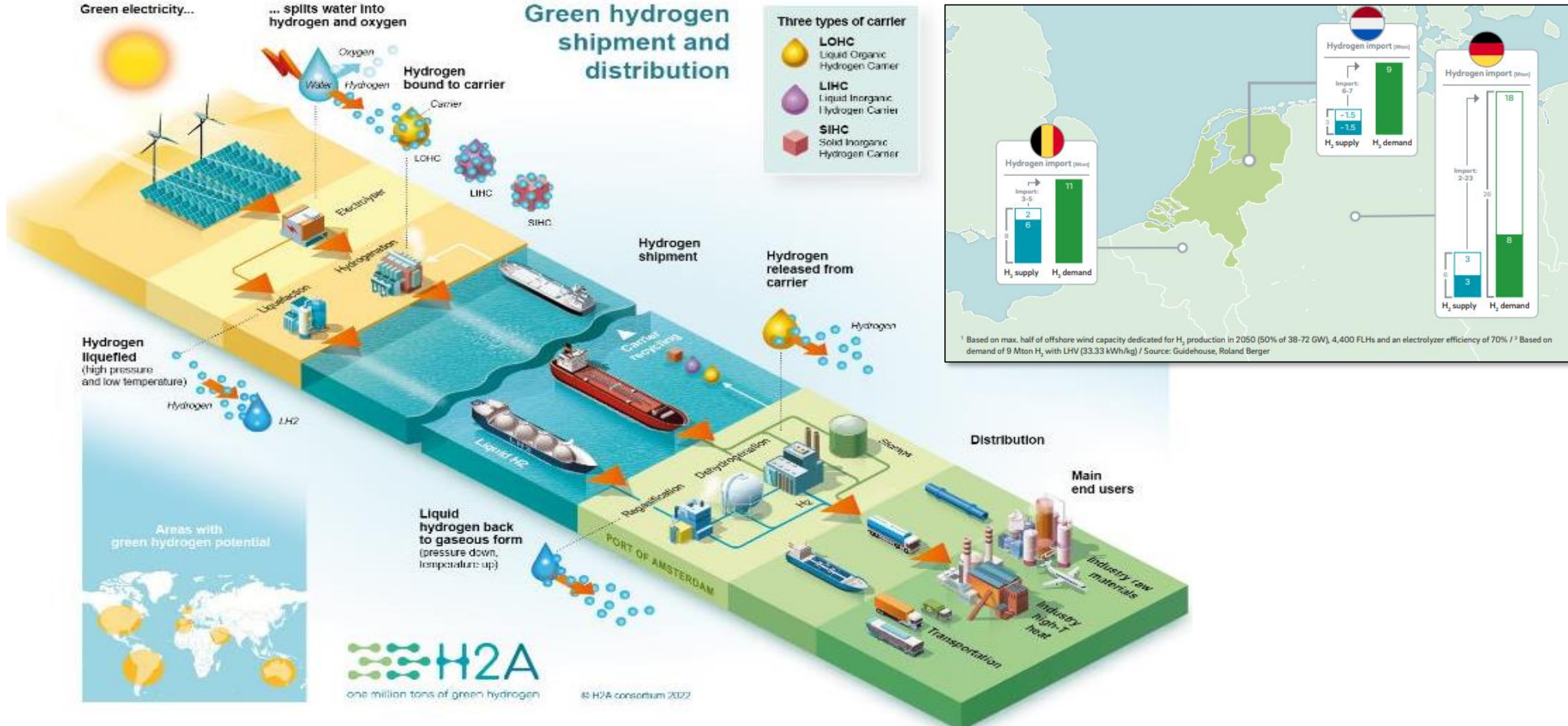
Inland vessels

7.500

Sea going vessels
bezoeken



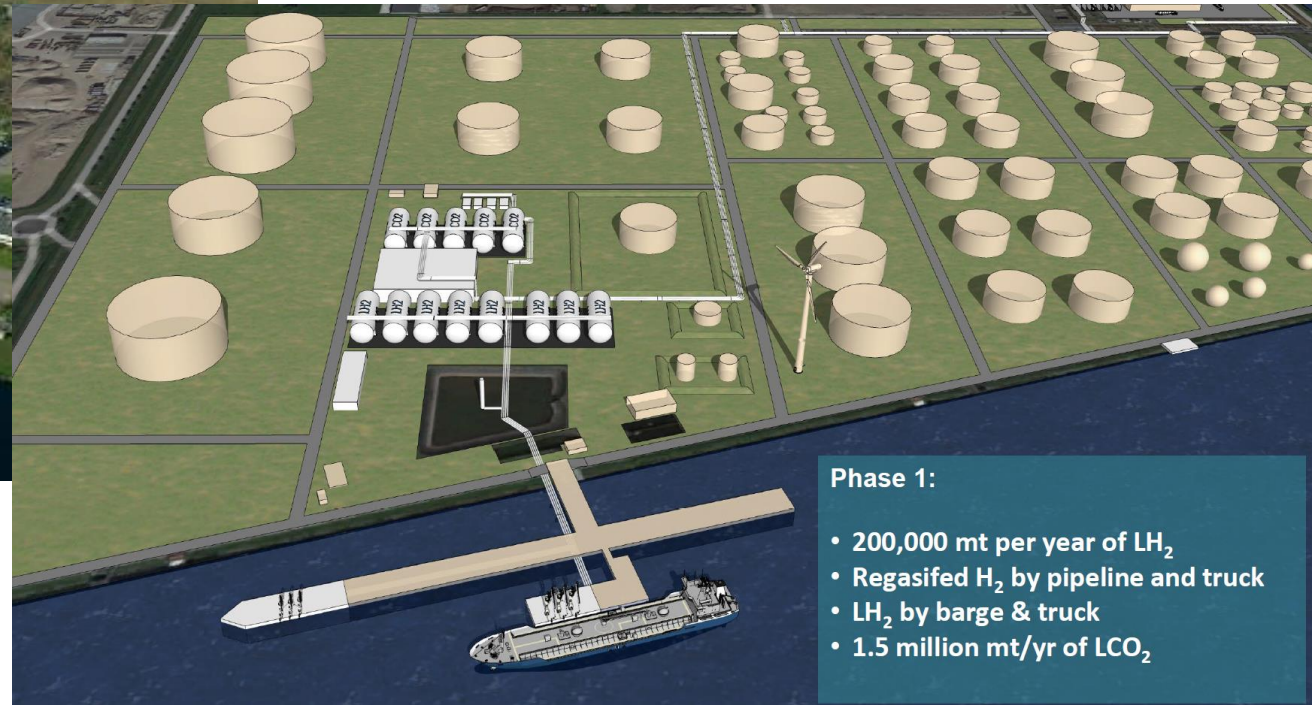
Port of Amsterdam aims to import green hydrogen to meet both national and European demand



LH2-import terminal



Dedicated LH2-import terminal.
Direct connectivity to (inter)national backbone
Dedicated LH2 shipping (Gaslog Shipping)
Operational: 2027



Phase 1:

- 200,000 mt per year of LH₂
- Regasified H₂ by pipeline and truck
- LH₂ by barge & truck
- 1.5 million mt/yr of LCO₂

